

# Count Drawing

Customer : GIGA VTECH  
 C.D Number : KH0912001  
 Description : LIQUID CRYSTAL DISPLAY MODULE

| Acceptance |
|------------|
|            |

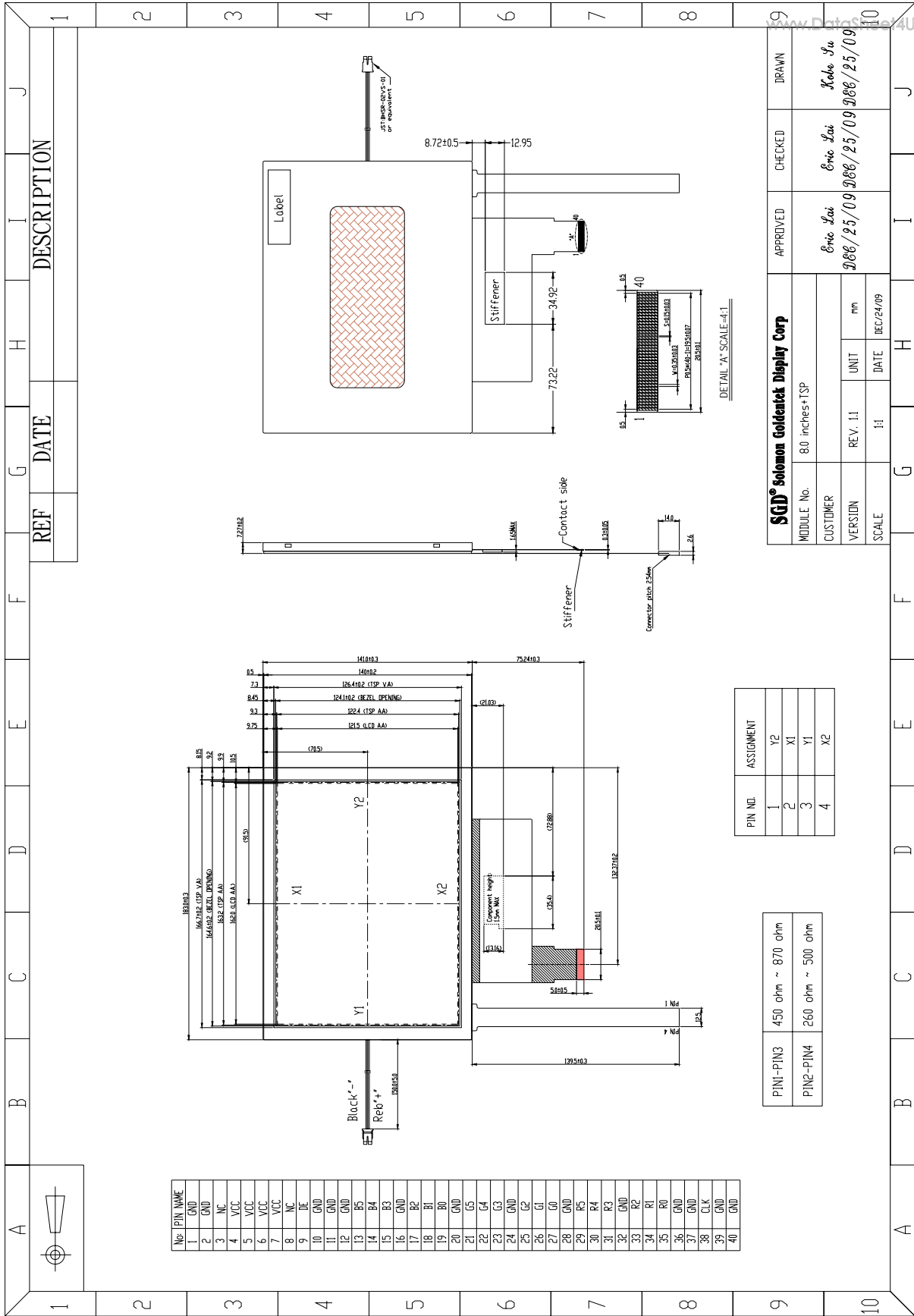
**Solomon Goldentek Display Corp.**

18 Ta-Yeh St., Ta-Fa Industrial Park, Ta-Liao  
 Hsiang, Kaohsiung Hsien 831, TAIWAN R.O.C  
 FAX: 886-7-788-6806~8

| Approved by                  | Checked by |                              | Made by                     |
|------------------------------|------------|------------------------------|-----------------------------|
| <i>Eric Lai</i><br>DEC/25/09 |            | <i>Eric Lai</i><br>DEC/25/09 | <i>Kobe Su</i><br>DEC/25/09 |

| Resolution                          |                                       |
|-------------------------------------|---------------------------------------|
| Number of Pixels                    | 800(W)*RGB*600(H)                     |
| Dot Pitch (mm)                      | 0.2025(W)*0.2025(H)                   |
| Color Pixel Arrangement             | RGB Stripe                            |
| Mechanical                          |                                       |
| Active Area (mm)                    | 162.0(W)*121.5(H)                     |
| Module Outline Dimension            | 183.0(W)*141.0(H)*7.2(T)              |
| Optical                             |                                       |
| Contrast Ration                     | 450:1(typ)                            |
| Response Time Tr+Tf (ms)            | 50 ms (typ)                           |
| Viewing Angle(H/V)                  | 12'/ 6'/ 3'/ 9 : 70/70/60/70, CR ≥ 10 |
| Display Mode                        | Normal white                          |
| Color Saturation (NTSC%)            | 50% (typ)                             |
| Optimum Viewing Direction           | 6 o'clock                             |
| LCM Brightness (cd/m <sup>2</sup> ) | 320 cd/m <sup>2</sup> (typ)           |
| Backlight driving condition         | If=180mA , Vf=(9.9V)                  |
| Electrical                          |                                       |
| Input Signals                       | 6 bits RGB                            |
| Number of Colors                    | 262K                                  |
| Power supply                        | DC 3.3V                               |
| T/P characteristics(with T/P)       |                                       |
| Structure type                      | 4-wire analog type                    |
| Structure of surface                | Anti-glare,3H                         |
| Electric characteristics            | DC 5V                                 |
| Environmental (with T/P)            |                                       |
| High Temperature Storage            | 80°C ,120hr                           |
| Low Temperature Storage             | -30°C ,120hr                          |
| High Temperature Operation          | 70°C ,120hr                           |
| Low Temperature Operation           | -20°C ,120hr                          |

**SOLOMON GOLDENTEK DISPLAY CORP. SGD®**



| REF | DATE | DESCRIPTION |
|-----|------|-------------|
|     |      |             |

| MODULE No. | 8.0 inches TSP |
|------------|----------------|
| CUSTOMER   |                |
| VERSION    | REV. 1.1       |
| SCALE      | 1:1            |

| PIN NO. | ASSIGNMENT |
|---------|------------|
| 1       | Y2         |
| 2       | X1         |
| 3       | Y1         |
| 4       | X2         |

|           |                   |
|-----------|-------------------|
| PIN1-PIN3 | 450 ohm ~ 870 ohm |
| PIN2-PIN4 | 260 ohm ~ 500 ohm |

| No. | PIN NAME |
|-----|----------|
| 1   | GND      |
| 2   | GND      |
| 3   | NC       |
| 4   | VCC      |
| 5   | VCC      |
| 6   | VCC      |
| 7   | VCC      |
| 8   | NC       |
| 9   | DE       |
| 10  | GND      |
| 11  | GND      |
| 12  | GND      |
| 13  | R5       |
| 14  | B4       |
| 15  | B3       |
| 16  | GND      |
| 17  | B2       |
| 18  | B1       |
| 19  | R0       |
| 20  | GND      |
| 21  | G5       |
| 22  | G4       |
| 23  | G3       |
| 24  | GND      |
| 25  | G2       |
| 26  | G1       |
| 27  | G0       |
| 28  | GND      |
| 29  | R5       |
| 30  | R4       |
| 31  | R3       |
| 32  | GND      |
| 33  | R2       |
| 34  | R1       |
| 35  | R0       |
| 36  | GND      |
| 37  | GND      |
| 38  | CLK      |
| 39  | GND      |
| 40  | GND      |